

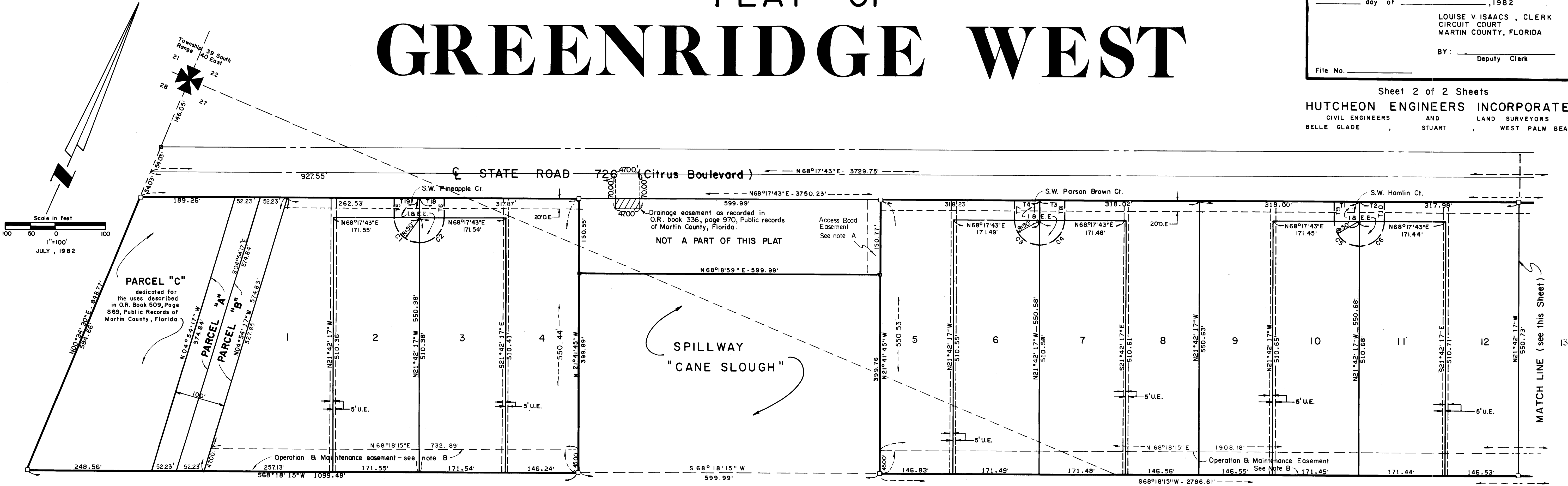
# PLAT OF GREENRIDGE WEST

I, Louise V. Isaacs, Clerk of the Circuit Court of Martin County, Florida, hereby certify that this plat was filed for record in Plat Book 9, Page 32, Martin County, Florida, public records, this day of \_\_\_\_\_, 1982

LOUISE V. ISAACS, CLERK  
CIRCUIT COURT  
MARTIN COUNTY, FLORIDA

BY: \_\_\_\_\_ Deputy Clerk

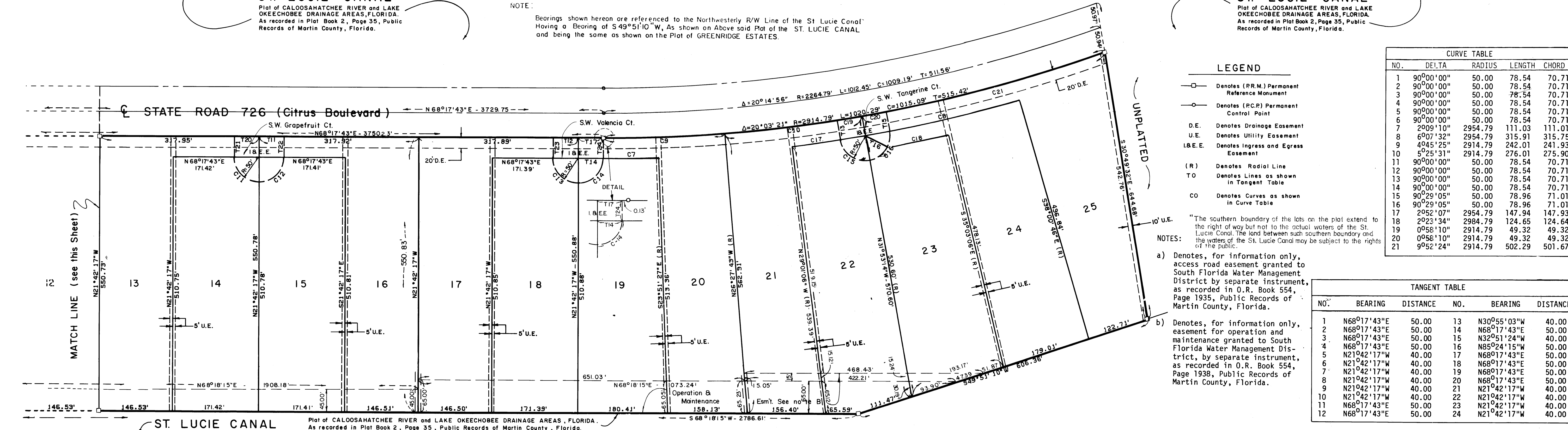
Sheet 2 of 2 Sheets  
**HUTCHEON ENGINEERS INCORPORATED**  
CIVIL ENGINEERS AND LAND SURVEYORS  
BELLE GLADE STUART WEST PALM BEACH



**ST. LUCIE CANAL**  
Plat of CALOOSAHATCHEE RIVER and LAKE OKEECHOBEE DRAINAGE AREAS, FLORIDA.  
As recorded in Plat Book 2, Page 35, Public Records of Martin County, Florida.

NOTE: Bearings shown hereon are referenced to the Northwesterly R/W Line of the St. Lucie Canal Having a Bearing of S 49° 51' 10" W, As shown on Above said Plat of the ST. LUCIE CANAL and being the same as shown on the Plat of GREENRIDGE ESTATES.

**ST. LUCIE CANAL**  
Plat of CALOOSAHATCHEE RIVER and LAKE OKEECHOBEE DRAINAGE AREAS, FLORIDA.  
As recorded in Plat Book 2, Page 35, Public Records of Martin County, Florida.



**LEGEND**

- Denotes (P.R.M.) Permanent Reference Monument
- Denotes (P.C.P.) Permanent Control Point
- D.E. Denotes Drainage Easement
- U.E. Denotes Utility Easement
- I.B.E.E. Denotes Ingress and Egress Easement
- (R) Denotes Radial Line
- T.O. Denotes Lines as shown in Tangent Table
- C.O. Denotes Curves as shown in Curve Table

NOTES:  
The southern boundary of the lots on the plat extend to the right of way but not to the actual waters of the St. Lucie Canal. The land between such southern boundary and the waters of the St. Lucie Canal may be subject to the rights of the Public.

a) Denotes, for information only, access road easement granted to South Florida Water Management District by separate instrument, as recorded in O.R. Book 554, Page 1935, Public Records of Martin County, Florida.

b) Denotes, for information only, easement for operation and maintenance granted to South Florida Water Management District, by separate instrument, as recorded in O.R. Book 554, Page 1938, Public Records of Martin County, Florida.

CURVE TABLE				
NO.	DELTA	RADIUS	LENGTH	CHORD
1	90°00'00"	50.00	78.54	70.71
2	90°00'00"	50.00	78.54	70.71
3	90°00'00"	50.00	78.54	70.71
4	90°00'00"	50.00	78.54	70.71
5	90°00'00"	50.00	78.54	70.71
6	90°00'00"	50.00	78.54	70.71
7	2009'10"	2954.79	315.03	315.03
8	6907'32"	2954.79	315.91	315.75
9	4945'25"	2914.79	242.01	241.93
10	5°25'31"	2914.79	276.01	275.90
11	90°00'00"	50.00	78.54	70.71
12	90°00'00"	50.00	78.54	70.71
13	90°00'00"	50.00	78.54	70.71
14	90°00'00"	50.00	78.54	70.71
15	90°29'05"	50.00	78.96	71.01
16	90°29'05"	50.00	78.96	71.01
17	2°52'07"	2954.79	147.94	147.93
18	2°23'34"	2984.79	124.65	124.64
19	0°58'10"	2914.79	49.32	49.32
20	0°58'10"	2914.79	49.32	49.32
21	9°52'24"	2914.79	502.29	501.67

TANGENT TABLE					
NO.	BEARING	DISTANCE	NO.	BEARING	DISTANCE
1	N68°17'43"E	50.00	13	N30°55'03"W	40.00
2	N68°17'43"E	50.00	14	N68°17'43"E	50.00
3	N68°17'43"E	50.00	15	N32°51'24"W	40.00
4	N68°17'43"E	50.00	16	N85°24'15"W	50.00
5	N21°42'17"W	40.00	17	N68°17'43"E	50.00
6	N21°42'17"W	40.00	18	N68°17'43"E	50.00
7	N21°42'17"W	40.00	19	N68°17'43"E	50.00
8	N21°42'17"W	40.00	20	N68°17'43"E	50.00
9	N21°42'17"W	40.00	21	N21°42'17"W	40.00
10	N21°42'17"W	40.00	22	N21°42'17"W	40.00
11	N68°17'43"E	50.00	23	N21°42'17"W	40.00
12	N68°17'43"E	50.00	24	N21°42'17"W	40.00